



GS COLLEGE & SCHOOL OF NURSING

Address: NH 9, Near Railway Station, Pilkhuwa, Hapur, Uttar Pradesh - 245304

Annual Report 2024-25



- General Nursing & Midwifery
- B.Sc. Nursing

FOR ANY ENQUIRY:

+91-9027948004,

Visit us at: www.gsnursingcollege.in

INDEX

S. No.	Particular	Page No.
1.	Our Mission	1
2.	Message from the Principal	2
3.	Message to Faculty and Staff	3
4.	Message to Students	4
5.	Overview	5
6.	Faculty	6
7.	Professional Exposure Visits	7
8.	Group Projects and Camps	8
9.	Internships and Training Programmes	9
11.	Seminars and Workshops	11
12.	Student Workshops on Essential Healthcare Modules	12
13.	Visits to professional Organizations	13
14.	Simulation – Based Learning	14
15.	Community Engagement Programs	15
16.	Research Opportunities	16
17.	Sports and Cultural Events	17
18.	Conclusion	18

OUR MISSION

Mission and Core Values

GS College and School of Nursing is dedicated to deliver a dynamic and transformative nursing education that prepares graduates to become compassionate, highly skilled and globally informed healthcare professionals. Through innovative academic strategies, evidence-based practice and meaningful community engagement, the College is committed to advancing excellence in nursing practice and leadership. Its mission is to develop competent and ethical nursing professionals who are devoted to improve the health and well-being of individuals, families and communities, thereby contributing to the future of healthcare at local, national and global levels.

CORE VALUES

Excellence

The College upholds the highest standards of academic rigor and clinical competence. Educational programs and institutional services are continuously evaluated and enhanced to ensure quality, relevance and alignment with evolving healthcare needs. A strong commitment to excellence underpins all teaching, learning and professional activities.

Compassion

Compassion and empathy are recognized as essential foundations of professional nursing practice. The College cultivates in its students a comprehensive understanding of the physical, emotional and psychological needs of patients and their families. Graduates are prepared to deliver care with dignity, respect, sensitivity and cultural awareness.

Integrity

GS College and School of Nursing maintain uncompromising ethical standards across all academic, clinical, and administrative functions. The institution promotes integrity, transparency, accountability, and professionalism in both education and practice. A culture of trust and ethical responsibility is actively fostered among students, faculty, and staff.

Cooperation

The College values collaboration as a critical component of effective education and healthcare delivery. It promotes an inclusive, diverse, supportive academic environment to encourage multidisciplinary and inter professional collaboration.

Lifelong Learning

The importance of continuous professional development and lifelong learning.

MESSAGE FROM THE PRINCIPAL

It is a distinct honor to extend a warm welcome to GS College And School of Nursing—an institution where innovation, compassion, and academic excellence converge to advance nursing education and professional practice.

As Principal, I am privileged to lead this distinguished College and to work in close collaboration with a highly committed team of faculty and staff who consistently uphold the highest standards of instructions, while preparing our students for successful and meaningful careers in nursing.



Prof. Christina George
Principal

At GS College and School of Nursing, the holistic development of our students remains a central priority. We firmly believe that excellence in nursing education extends beyond academic achievement and encompasses the cultivation of strong ethical values and professional integrity. Our faculty members are committed inculcating in students the core principles of compassion, honesty, excellence, teamwork, and lifelong learning. Serving not only as educators but also as mentors and role models, they employ innovative teaching approaches and rigorous clinical training to prepare students as competent, ethical, and empathetic healthcare professionals.

The overarching objectives of GS College and School of Nursing is to develop nursing practitioners who possess the knowledge, skills, and professional disposition necessary to deliver high-quality, patient-centered care. We take immense pride in our alumni, whose sustained contributions continues to strengthen the nursing profession and significantly improve the health and well-being of individuals, families, and communities.

I cordially invite prospective students who are passionate about the nursing profession to join us on this enriching journey of academic excellence and professional growth. As Principal, I remain unwavering in my commitment to guide, support, and mentor our students as they pursue their academic and professional aspirations.

Thank you for choosing GS College and School of Nursing. Together, let us embark on a purposeful journey that will shape the future of healthcare and create a lasting, positive impact on society.

Message to Faculty and Staff

Our faculty and staff are deeply committed to fostering a supportive and inclusive learning environment, delivering expert instruction and providing dedicated mentorship to enable students to achieve their fullest potential.

GS College and School of Nursing are supported by a team of highly qualified, experienced, and devoted faculty members who play a vital role in the academic, professional, and overall development of students.

The faculty demonstrate a strong commitment to academic advancement by actively organizing and participating in seminars, workshops, symposiums, research initiatives and comprehensive clinical and practical training across all domains of nursing.



Message to Students

At GS College and School of Nursing, we are committed to providing a supportive academic environment that fosters intellectual growth, professional competence, and personal development. With the guidance of experienced faculty members and comprehensive clinical exposure, students are prepared to meet the dynamic challenges of the healthcare system with confidence and professionalism.

The institution takes great pride in your decision to pursue a career in nursing and feels honored to be part of your professional journey. We hope that your time at GS College and School of Nursing will inspire you to strive for excellence, uphold the highest professional standards, and contribute positively to the advancement of healthcare services.

Our institution also encourages faculty members to engage in continuous professional development, higher education, research activities, and academic collaborations. These initiatives play a vital role in strengthening the quality of nursing education and maintaining a progressive academic environment.

The dedication, professionalism, and teamwork of our faculty and staff remain the cornerstone of the institution's success. Their commitment continues to inspire and guide students to become ethical, skilled, and compassionate healthcare professionals dedicated to serving society.

I wish you success, fulfillment, and a rewarding career in the noble profession of nursing.



Overview

FACULTY

Overview of GS College and School of Nursing

Academic Session: 2024 – 2025

CLINICAL PRACTICE

From its inception, GS College and School of Nursing has been driven by a vision filled with aspirations that has guided us to continually strive for excellence in every endeavor. Our mission is to provide a holistic and transformative nursing education, fostering an environment that integrates diverse learning opportunities beyond traditional classroom instruction. These initiatives enhance practical knowledge, develop essential skills, and prepare students professionally, ensuring they are well-equipped to meet the challenges of real-world healthcare.

GROUP PROJECTS AND CAMPS

INTERNSHIPS

During the academic session 2024–2025, GS College and School of Nursing welcomed **100 new students in the General Nursing and Midwifery (GNM) programme and 40 students in the B.Sc. Nursing program**. This report highlights the achievements of the past year while outlining a roadmap for continued growth and excellence in the years to come.

SEMINARS AND WORKSHOPS

MODULE HIGHLIGHTS

The GNM program commenced in **August 2025** with an intake of 60 students. A comprehensive physical and personnel orientation was conducted during the first week of admission to familiarize students with the academic and clinical environment.

PROFESSIONAL ORGANIZATIONS VISIT

Following the elevation of GS Medical College and Hospital to **GS University in July 2024**, the selection of B.Sc. Nursing students was conducted under the university's regulations. The **first semester of the B.Sc. Nursing programme began in October 2024**, providing students with a rigorous academic foundation and early exposure to clinical practice.

SIMULATION

The College remains committed to offering a broad spectrum of learning opportunities that combine theoretical knowledge and practical training thereby fostering the development of competent, ethical, and compassionate nursing professionals ready to make a meaningful impact in healthcare.

FACULTY

Faculty and Staff – GS College and School of Nursing

Principal

Mrs. Christina George, Professor cum Principal

Vice Principal

Mrs. Himadri Kalita, Professor cum Vice Principal

Professors and Associate Professor

Mr. Ravi Kant Sharma, Professor

Mrs. Deepa Rani, Associate Professor

Assistant Professors

Mrs. Meenakshi Kumari

Mr. Shivam Kumar

Mr. Prasannajeet Singh Hada

Mrs. Renu Bhatt

Ms. Sumbul Nisha

Nursing Tutors

Mr. Shakeel Ahmed

Ms. Megha

Mr. Mohar Singh Gurjar

Mrs. Kalpna Kumari

Mr. Harendra Singh

Mr. Taj Mohammad

Mohd Danish

Ms. Aqsa Jamal Khan

Ms. Kiran

Mr. Rohit Singhaniya

Mohd Amir Khan

Ms. Shikha Chauhan

Mr. Fahimuddin

Ms. Bhavna

Ms. Rani Kushwaha

Ms. Sonam Rani

Ms. Gulafsha

Mr. Mohd Shadab Malik

Ms. Pooja Upadhayay



Professional Exposure Visits

All B.Sc. Nursing and GNM students actively participate in clinical practice sessions, which constitute a vital component of their curriculum. Students are assigned to hospital and community postings in accordance with the prescribed hours and guidelines of the **Indian Nursing Council (INC)**. These clinical postings include structured rotations in:

GS Hospital

Students gain practical experience in patient care, clinical procedures and hospital management, allowing them to bridge the gap between theory and practice.

Primary Health Centers (PHC) and Community Health Centers (CHC)

Students are exposed to community health services, preventive care and public health initiatives, fostering an understanding of healthcare delivery at the grassroots level.

Mental Hospitals

Students receive specialized training in psychiatric nursing and mental health care, developing competence in addressing the unique needs of patients with mental health challenges.

This comprehensive hands-on training equips students to apply theoretical knowledge in real-world settings, thereby enhancing their critical nursing skills, clinical decision-making, and professional confidence.



GROUP PROJECTS AND CAMPS

Students actively participate in group projects under the guidance of experienced faculty, fostering teamwork and enabling the application of theoretical knowledge to practical scenarios. Each project is systematically designed to cover a broad range of nursing specialties, including Fundamentals of Nursing, Community Health Nursing, Medical-Surgical Nursing, Child Health Nursing, Mental Health Nursing, and Obstetrics and Gynecological Nursing.

Each project is designed to enhance students conceptual understanding through innovative approaches to problem-solving, critical thinking, and the development of effective healthcare models, preparing them to address real-world challenges with competence, creativity and effective collaborative skills.



Internship and Training Programs

Internship programs form an integral component of the curriculum, offering students firsthand exposure to professional nursing environments and real-world healthcare settings.

Internship

GNM 3rd Year Students and **B.Sc. Nursing 8TH Semester Students** are assigned to a variety of training centers, ensuring comprehensive practical learning and skill development.

Training Centers and Activities

- **Primary Health Centers (PHC) and Community Health Centers (CHC):** Hands-on exposure to community healthcare services, preventive care, and public health initiatives
- **Mental Hospitals:** Training in psychiatric nursing, mental health assessment and the management of patients with mental health conditions.
- **GS Hospital:** Practical experience in patient care across specialized units, including the *Operation Theatre (OT)*, Intensive Care Unit (ICU), Emergency/Casualty, and Labour Room.
- **Public Health and Welfare Centers:** Engagement with Anganwadi Centers, School Health Programs, and Urban Health Centers to understand community and preventive healthcare.
- **Educational and Administrative Areas:** Exposure to the Nursing Education Department, Nursing Administration Office, and Nursing Management in clinical settings to develop leadership and administrative skills
- **AYUSH Clinics Visit:** Educational visits are conducted to gain knowledge about alternative systems of medicine and holistic healthcare practices.

- **Biomedical Waste Management Units:** Training on proper segregation, collection, treatment, and disposal of medical waste, emphasizing safety and environmental responsibility.
- **Mother Dairy Educational Tour:** The visit provided insights into food safety, hygiene, processing, and quality control measures.
- **Sewage Treatment Plant Visits:** The visit enhanced awareness of sanitation, environmental health, and wastewater management.

Through these structured internships and educational visits, students apply theoretical knowledge in practical settings, develop critical professional competencies, and gain a comprehensive understanding of healthcare systems, public health, and environmental safety.

Field training sessions provide students with the opportunity to apply theoretical knowledge in real-world settings. Under the guidance and supervision of experienced faculty, students actively participate in community health programs, rural health missions, and public health initiatives. These experiences enable students to serve diverse populations, gain insights into community health dynamics, and develop a comprehensive understanding of the challenges and responsibilities inherent in delivering healthcare across diverse contexts.



SEMINARS AND WORKSHOPS

Regularly organized seminars and workshops offers students sophisticated platforms to engage with experts, gain insights into the latest advancements in healthcare and explore specialized topics. These events include guest lectures, panel discussions, and hands-on training sessions, enabling students to deepen their knowledge, enhance enhance practical skills, and stay abreast of emerging trends and best practices in the nursing profession.



Guest Lecture

Panel Discussion

Training

Student Workshops on Essential Healthcare Modules

Students recently participated
in a comprehensive workshop

- **First Aid:** Techniques for providing immediate care in emergency situations.
- **Basic Cardiac Life Support (BCLS):** Training in essential life-saving interventions.
- **Advanced Cardiac Life Support (ACLS):** Management of critical cardiac emergencies.
- **Integrated Management of Neonatal and Childhood Illness (IMNCI):** Strategies for delivering comprehensive child healthcare.
- **Palliative Care:** Approaches to enhancing the quality of life for patients with serious illnesses.
- **Essential Newborn Care:** Best practices in neonatal health and safety.
- **Pediatric Life Support:** Emergency care for critically ill children.
- **Facility-Based Newborn Care (FBNBC):** Specialized care for high-risk newborns.

Practical skills



Hands-on training



Exposure to the latest guidelines



Visits to professional Organizations

To bridge the gap between academic learning and professional practice, students regularly visits esteemed healthcare and professional organizations. A recent visit to the *Trained Nurses Association of India (TNAI)* provided students with valuable insights into the pivotal role of nursing in *policy-making, professional advocacy, and the advancement of healthcare standards*. The visit also offered students an opportunity to *interact with experienced professionals*, gain awareness of emerging trends in the nursing field, and understand the broader scope of the nursing profession beyond clinical practice



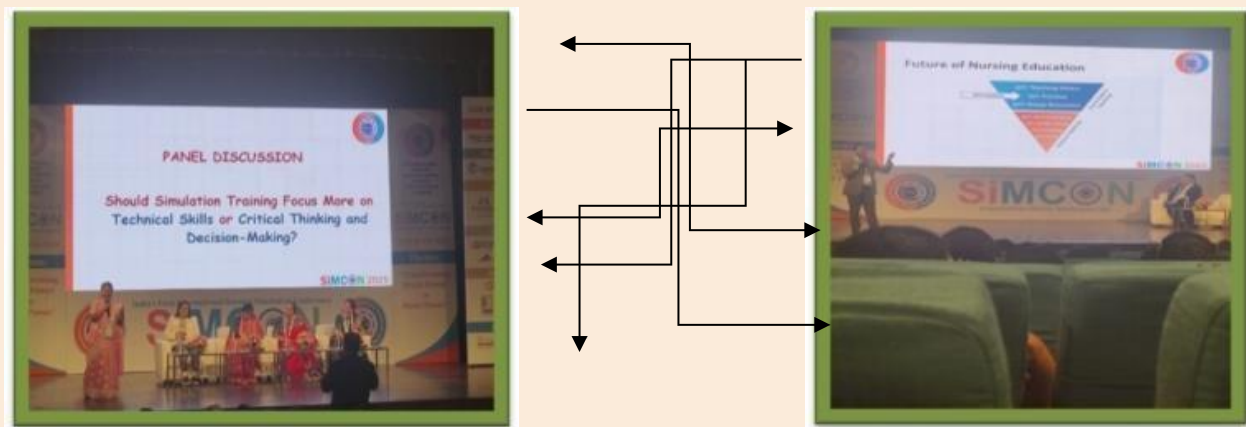
Simulation- Based Learning

GS College / School of Nursing is equipped with *state-of-the-art simulation laboratories*, providing students with a safe and controlled environment to practice and refine their clinical skills. These simulations replicate real-life medical scenarios, enabling students to develop confidence, competence, and decision-making abilities essential for effective patient care.

In line with our commitment to advancing nursing education, *three faculty members from GS College of Nursing attended India's first International Nursing Simulation Conference (SIMCON)*, organized by *INACSL* and the *North India Regional Center for Enhancing Simulation*, on 17th and 18th February 2024. The participants included:

- **Prof. Christina George**, Principal, GS College of Nursing
- **Ms. Farha Usmani**, Associate Professor, GS College of Nursing
- **Ms. Gazala Parveen**, Nursing Tutor

Building on this initiative, on 22nd February 2024, **Ms. Farha Usmani conducted a Continuing Nursing Education (CNE) session** on “*Simulation in Nursing Education*” for all nursing faculty, emphasizing the **integration of advanced simulation techniques into teaching practices** to enhance experiential learning and clinical preparedness.



Community Health Engagement and Awareness Programs

Students of GS College and School of Nursing actively participate in **community health awareness initiatives**, including health camps, vaccination drives, and wellness education programs. These activities not only provide **practical learning experiences** but also foster a strong sense of **social responsibility and community service**.

The nursing faculty also commemorates significant **health-related observances** by organizing educational rallies, street plays (Nukkad Natak), and public awareness programs. Notable events include:

- **Cancer Awareness Day Rally:** Promoting early detection, prevention, and awareness about cancer.
- **World Health Day:** Conducting health check-ups and educational sessions to encourage general wellness.
- **Breastfeeding Awareness Week:** Educating mothers on the importance of breastfeeding through interactive workshops and community performances.

Through these initiatives, students gain hands-on experience in **health education, public engagement, and preventive care**, preparing them to become compassionate and socially responsible nursing professionals.



COMMUNITY
HEALTH
PROGRAMME

Research Opportunities

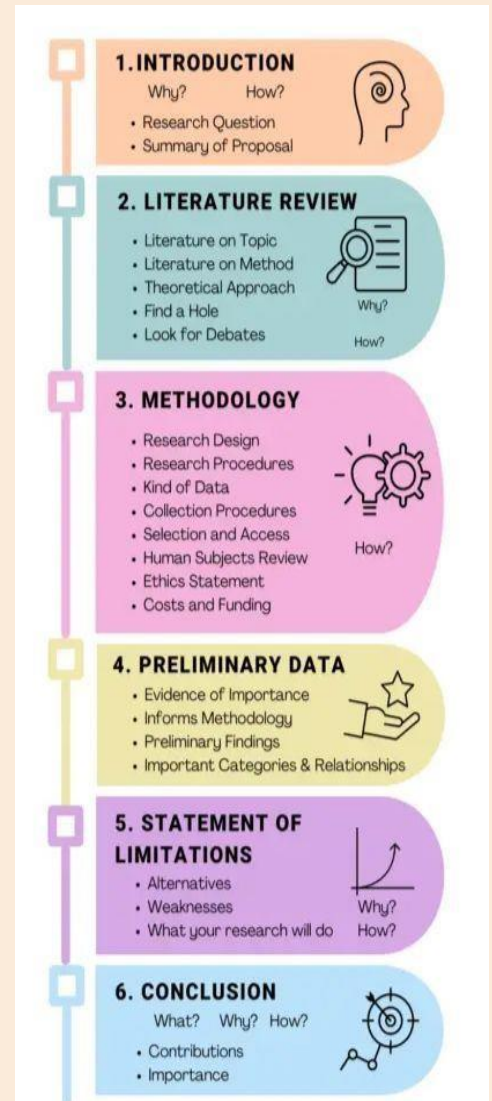
The institution encourages students to engage in research activities under the guidance of faculty mentors. B.Sc. Nursing Students are divided into groups to conduct research on various topics.

Each group undertakes a project involving data, analysis, and presentation of findings, contributing valuable insights to the nursing field.

The institution actively encourages students to participate in research activities under the guidance and supervision of experienced faculty mentors. Research is considered an integral component of nursing education, as it enhances critical thinking, analytical skills, and evidence-based practice among students. These projects provide valuable insights and contribute to the development of nursing knowledge and practice.

The research activities help students develop scientific inquiry skills and encourage them to apply theoretical knowledge to real-life healthcare situations. Through these initiatives, students gain experience in research methodology, ethical considerations in research, and dissemination of research findings.

Faculty members also support students in presenting their research work in seminars, workshops, and academic forums, thereby promoting a culture of research and innovation within the institution.



Sports and Cultural Events

To ensure the holistic development of students, GS College and School of Nursing organizes various sports and cultural events, including:

- **Sports Activities:** Students participate in competitive and recreational sports to promote physical fitness and teamwork.
- **Nurses Day Celebration:** Acknowledging the contributions of nurses with activities and programs.
- **Surge (A Cultural Night):** this event serves as platform for students to showcase their creative talent beyond clinical and academic curriculum
- **Lamp Lighting and Oath Ceremony:** Symbolizing the commitment of nursing students to their profession.
- **Fresher's Party:** Welcoming new students with vibrant celebrations.
- **UP Foundation Day:** Honoring the foundation of Uttar Pradesh with cultural programs.



CONCLUSION

As we reflect on the accomplishments of this academic year, it is with great pride and gratitude that I present this report to our stakeholders, faculty, staff, students, and the broader academic community. This year has been one of notable academic distinction. Our students have demonstrated remarkable dedication to their studies, achieving outstanding results across all degree programs.

Our faculty continues to uphold the highest standards of teaching, research, and scholarship, ensuring that the academic experience we offer remains relevant, challenging, and transformative. The quality of dissertations, research projects, and coursework submitted this year reflects the depth of learning taking place across all departments.

We have also made meaningful progress in strengthening the academic infrastructure that supports student success — from enhanced academic advising and assessment frameworks to the continued development of our curriculum in alignment with industry and professional standards.

Looking ahead, we remain firmly committed to academic excellence, continuous improvement, and the development of graduates who are not only knowledgeable in their fields but equipped to lead and contribute meaningfully to society.

I extend my sincere appreciation to every member of our community whose efforts have made this year's achievements possible. Together, we continue to build an institution worthy of the aspirations of every student who walks through our doors.